

BÖNING SHIP AUTOMATION

SOLUTIONS FOR WIND FARM VESSELS

Böning USA, Inc
Boca Raton – FL/ www.boening-usa.com

BÖNING

Offshore Wind Energy Development in the U.S.

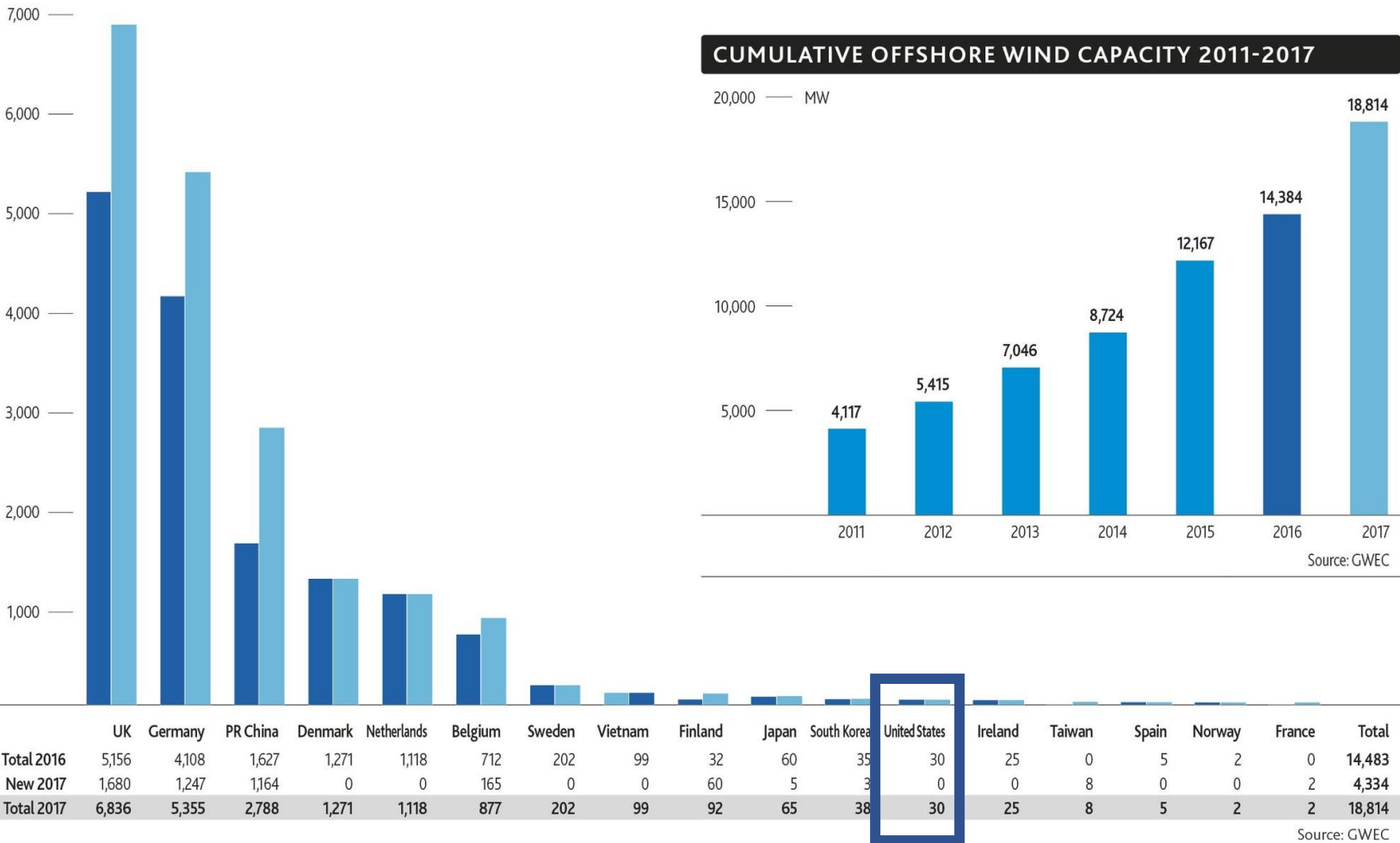
The United States has a vast offshore wind energy resource with a technical potential of more than 2,000 gigawatts (GW), or nearly double the nation's current electricity use. Harnessing America's offshore wind resources presents an enormous opportunity to create tens of thousands of highly-skilled jobs, revitalize coastal communities, and deliver large amounts of clean, reliable energy to the country's biggest population centers



The wind energy in the world

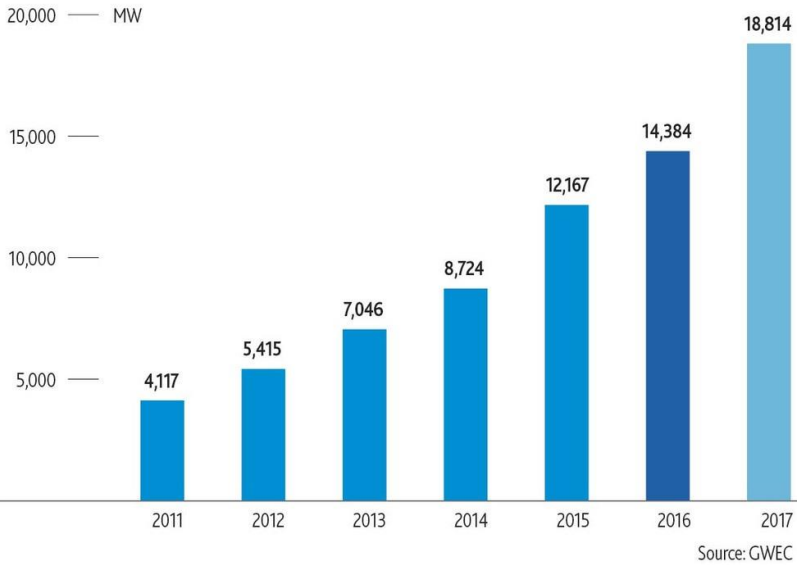
GLOBAL CUMULATIVE OFFSHORE WIND CAPACITY IN 2017

8,000 — MW Cumulative capacity 2016 Cumulative capacity 2017



Source: <https://gwec.net/global-figures/global-offshore/>

CUMULATIVE OFFSHORE WIND CAPACITY 2011-2017



BÖNING

Wind farm support vessels (WFSV)



BÖNING




Wind farm support vessels (WFSV) with Böning Systems

350 is the estimated number of wind farm vessels operating in Europe

130-150 is estimated number of vessels with Böning → (35%+)

Customer References



- 18m / 20m / 24m vessels
- Class notation: High Speed Craft vessels – DNV approval 
- Saved 400 building hours by using AHD-BMS
- Designed for robustness for rough sea
- Reliability: 97% Service Level Agreement of the operator (Wind parks in Europe)

- Operators:

- Holyhead Marine (UK)
- Seacat Services SCC (UK)
- Maritime Craft Services (UK)





Böning IBS
(Integrated Bridge System)

Customer References

DAMEN



- Damen FCS 2610
- Class notation: Fast Utility Vessel Sea Area 3 – BV approval
- Operators:
 - Maritime Craft Services (UK)



Source: http://www.damentrading.com/-/media/Trading/For-Sale/Crewboat/07358-Damen-Fast-Crew-Supplier-2610/07358_Damen_Fast_Crew_Supplier_2610_Twin_Axe_Specification_Damen_Trading_10_05_2017.pdf



BÖNING



Böning AMCS
(Alarm, Monitoring and Control
System)

Böning AHD-DPS02
(Nav Lights Control System)

Customer References



Denmark



UK



- Operators:

- Dong Energy



Source: <http://hvsa.dk/wp-content/uploads/2015/06/142120-227878.crew-transfer-vessels.pdf>



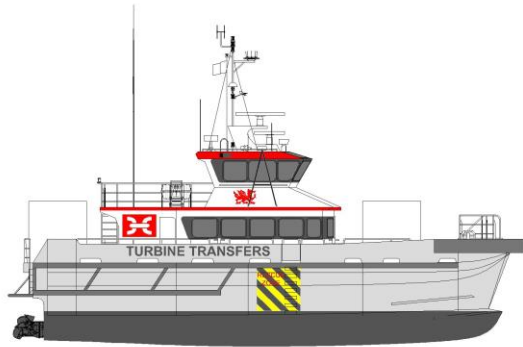
BÖNING



Böning AMCS
(Alarm, Monitoring and Control
System)

Böning VDCU
(CCTV System)

Customer References



- Wind Express Catamaran
- LOA = 27m
- Class notation: Det Norske Veritas (DNV) 1A1 HSLC Windfarm Service 1 R1
- High Speed Wind Farm Support Vessel (27 knots)
- Operators:
 - Holyhead Towing (UK)



Source: https://www.austal.com/sites/default/files/data-sheet/Austal%20Wind%20Express%2027_Data%20Sheet%20updated%20image_20615_0.pdf

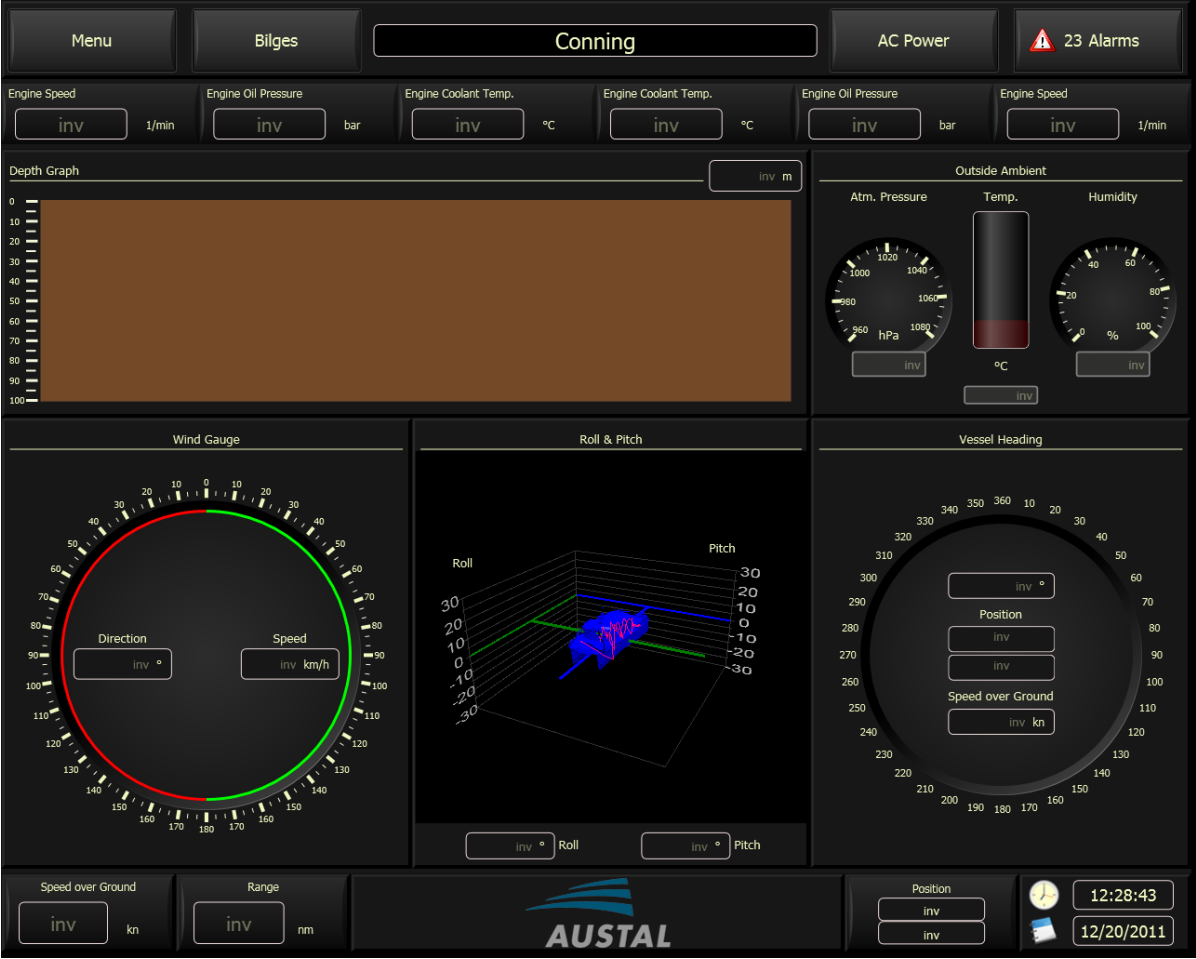


BÖNING

Böning AMCS
(Alarm, Monitoring and Control
System)

Böning AMCS
(Alarm, Monitoring and Control
System)





BÖNING

Customer References



- LOA = 19,40m
- Class notation: High Speed Craft vessels – DNV approval (wind farm service 2)
- Operators:
 - Frisia Offshore (Germany)



Source: <http://www.frisia-offshore.de/index.php?id=544&L=3>



Customer References



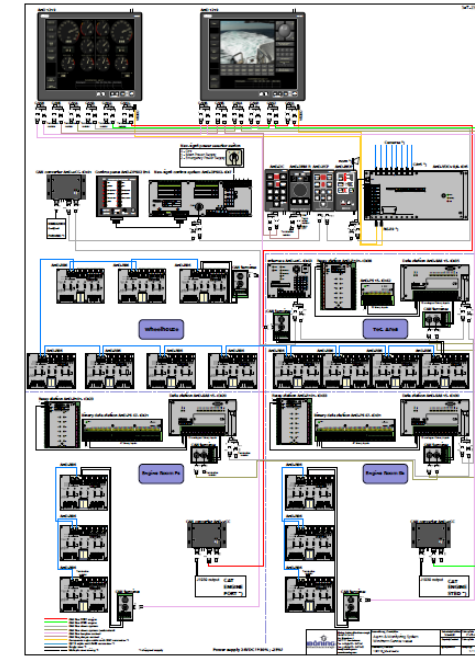
UK

- Offshore Windfarm Support Vessel
- LOA = 25.25m
- Class notation: UK – MCA – Cat1 Workboat
- Operators:
 - Mainprize Offshore (UK)



Mainprize Offshore Ltd
Four Generations of Offshore Experience Supporting the Offshore Industry

Source: http://www.mainprizeoffshore.co.uk/vessels/?page_id=177



BÖNING

Customer References



France



- Offshore Windfarm Support Vessel
- LOA = 25.25m
- Class notation: UK – MCA – Cat1 Workboat
- Operators:

- Mainprize Offshore (UK)

Mainprize Offshore Ltd
Four Generations of Offshore Experience Supporting the Offshore Industry

Source: <http://www.pirou.com/en/our-products/service/offshore-wind-farm-vessels/wind-farm-support-vessel-21m/1617.htm>



BÖNING

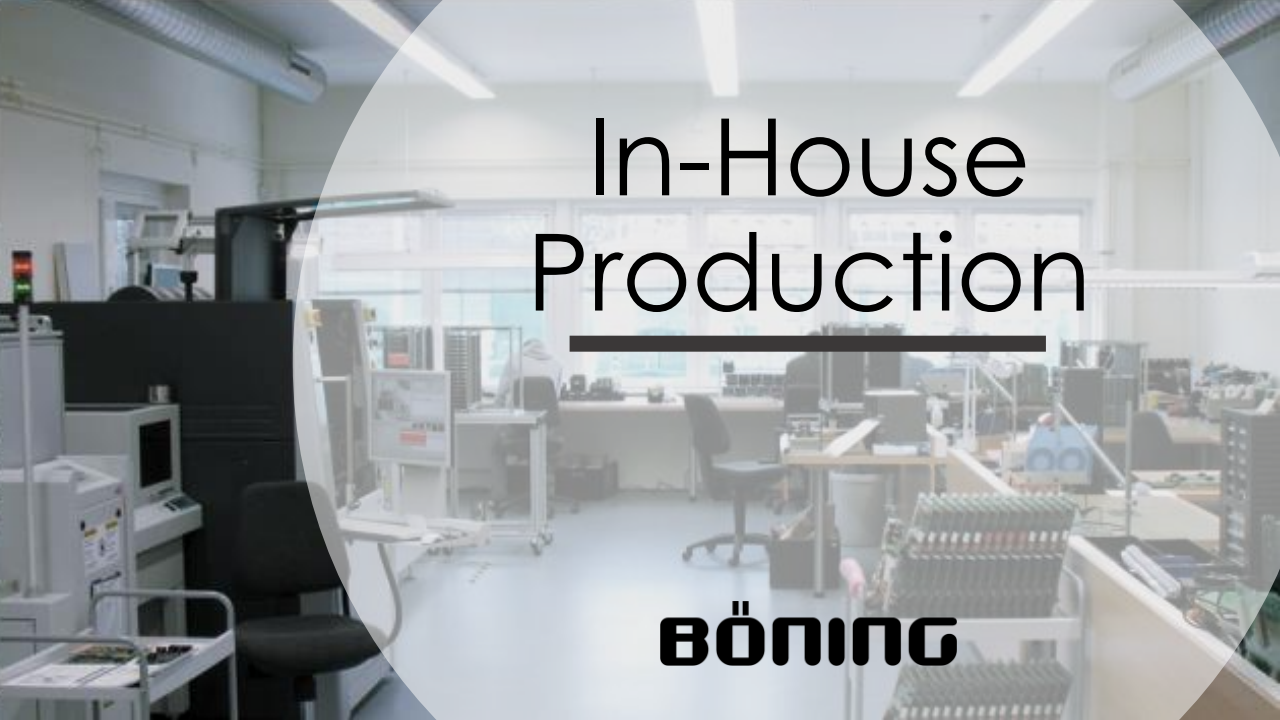
Böning Ship Automation

Head office/
factory
[Germany]

- Founded in 1977
- More than 100 employees (20% developing engineers)
- More than 20 000 devices produced per year
- Approx. 700 ships with Böning technology are put in operation every year



BÖNING



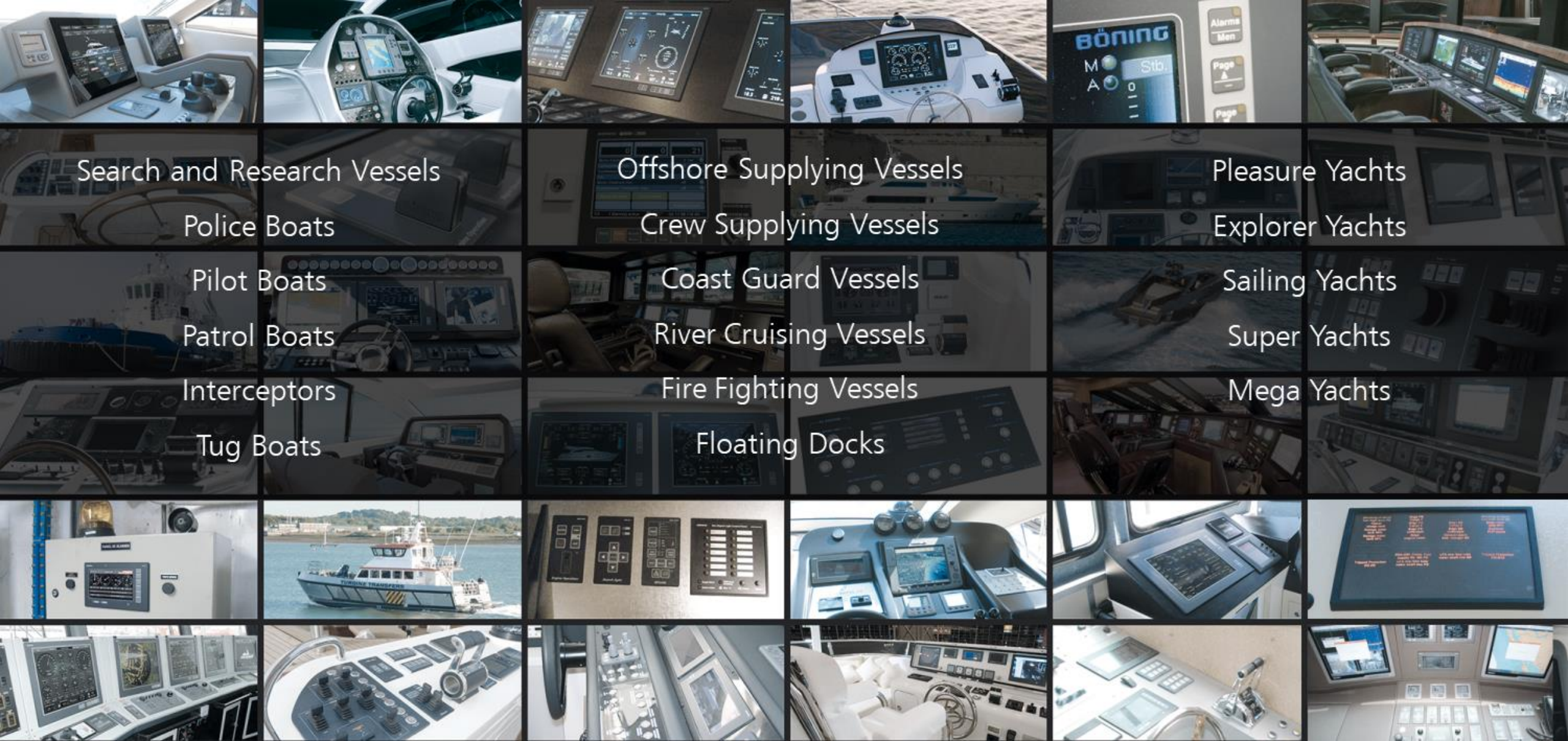
In-House Production

BÖNING

Sales & Service Locations

Boeing USA, Inc.
4281 NW 1st Avenue
Boca Raton FL 33431 - United States
Phone/ Fax: +1 (561) 372-9894
info@boeing-usa.com





Search and Research Vessels

Police Boats

Pilot Boats

Patrol Boats

Interceptors

Tug Boats

Offshore Supplying Vessels

Crew Supplying Vessels

Coast Guard Vessels

River Cruising Vessels

Fire Fighting Vessels

Floating Docks

Pleasure Yachts

Explorer Yachts

Sailing Yachts

Super Yachts

Mega Yachts

BÖNING



Products

- Alarm Systems
 - Bilge Monitoring
 - Tank Monitoring
 - Doors / Hatches Monitoring
 - Battery / Power monitoring
- Marine Monitors and Panel PCs
- Engine Monitoring Displays
- NMEA 2000 / J1939 Gateways
- Bridge Management Systems / Integrated Bridges

Integrated Bridge Solution



Virtual ECDIS Keyboard

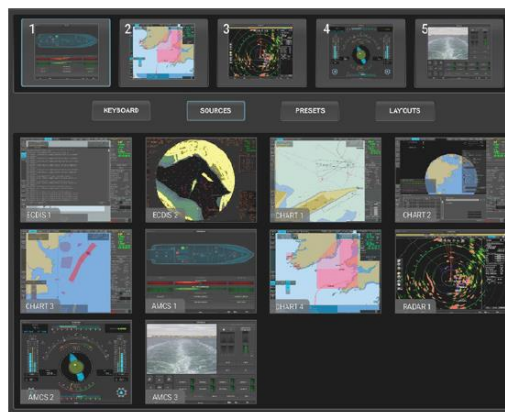


Virtual Radar Keyboard

Seamless integration
to increase flexibility
and usability.

Watch video:

[HTTPS://WWW.YOUTUBE.COM/WATCH?V=GQM3OWMTSQI](https://www.youtube.com/watch?v=GQM3OWMTSQI)



Video Switch Page

BÖNING SMARTBRIDGE



BÖNING SMART BRIDGE



UNLIMITED SOLUTIONS FOR SHIP
ALARM, MONITORING AND CONTROL

BÖNING

Thank you. Contact us for inquiries.

www.boening-usa.com



4281 NW 1st Ave, Boca Raton – FL (33431)



+1 (561) 372-9894



www.boening-usa.com



info@boening-usa.com



www.linkedin.com/company/boeningusa/



www.instagram.com/boening.usa/



<http://www.facebook.com/boeningusa/>

BÖNING