



Manufacturer's Training

Concepts about Vessel Monitoring Systems – from small to large boats



Luiz Barbarini – 09/23/2021

BÖNING

Agenda

1. Introduction about Böning
2. Our customers
3. What is a vessel monitoring system?
4. Other systems integrated to the ship vessel monitoring
5. Stand-alone devices
6. Why vessel monitoring and automation is important for marine electronics companies?
7. Integrated bridge systems
8. Solutions for NMEA dealers
9. Böning Dealership Program
10. Q&A



1. Introduction about Böning



BÖNING

Head office/ factory

[Germany]

- Founded in 1977
- More than 100 employees (20% developing engineers)
- More than 20 000 devices produced per year
- Approx. 700 ships with Böning technology are put in operation every year



BÖNING



BÖNING



In-House
Production

BÖNING

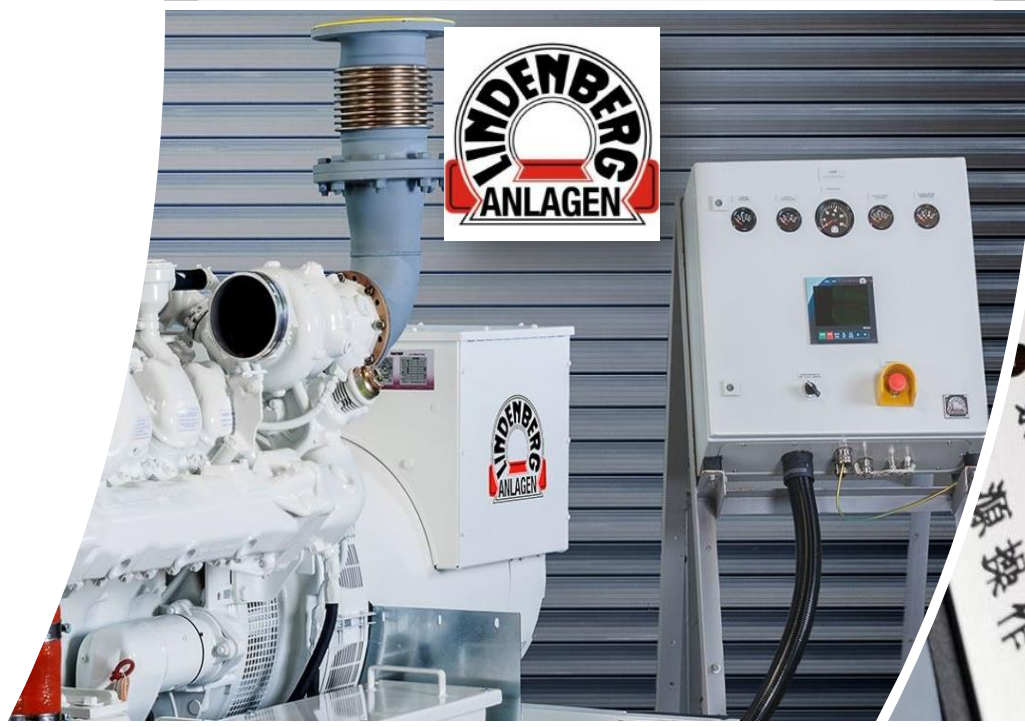
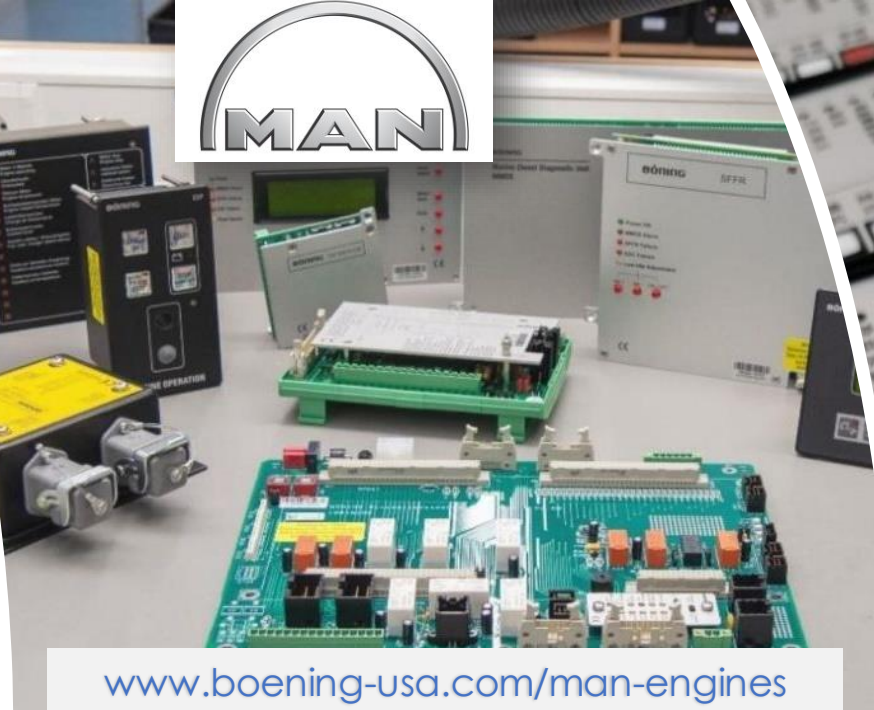


Products

- Alarm Systems
 - Bilge Monitoring
 - Tank Monitoring
 - Doors / Hatches Monitoring
 - Battery / Power monitoring
- Marine Monitors and Panel PCs
- Engine Monitoring Displays
- Helm Panels
- NMEA 2000 / J1939 Gateways



OEM Examples





Sales & Service Locations

Boening USA, Inc.
4281 NW 1st Avenue
Boca Raton FL 33431 - United States
Phone/ Fax: +1 (561) 372-9894
info@boening-usa.com





Show Room



Stock of parts

Boca Raton-FL

Technical Support and
Training Center for Integrators

BÖNING

2. Our customers



BÖNING



Search and Research Vessels

Police Boats

Pilot Boats

Patrol Boats

Interceptors

Tug Boats

Offshore Supplying Vessels

Crew Supplying Vessels

Coast Guard Vessels

River Cruising Vessels

Fire Fighting Vessels

Floating Docks

Pleasure Yachts

Explorer Yachts

Sailing Yachts

Super Yachts

Mega Yachts

Wide portfolio that fits all types of vessels.

BÖNING

Customer References

Hatteras

AZIMUT
YACHTS

FERRETTI
YACHTS

VIKING
RIVER CRUISES

OCEAN ALEXANDER

FLEMING

ABSOLUTE

CCN
CERRI CANTIERI NAVALI

HORIZON
Define Your Horizon™

BAYLISS
BOATWORKS

PRINCESS

ROSSI
The Luxury of Experience

BAGLIETTO
1854

ABEKING & RASMUSSEN

SANLORENZO

MCY
MONTECARLO YACHTS

FILIPPETTI YACHT

DRETTMANN
A CLASS OF ITS OWN

NORDHAVN
EUROPE LIMITED
THE ULTIMATE TRAWLER YACHT

HeySea

Benetti
ITALIAN EXCELLENCE SINCE 1873

Riva

PENDENNIS
WORLDCLASS SUPERYACHTS

ADLER
III SUPREMA

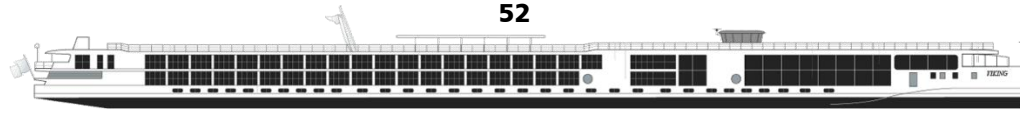


BÖNING

Customer References

Viking River Cruises

52



Damen

192

Pelindo III



South Boats



BÖNING

3. What is a vessel monitoring system?



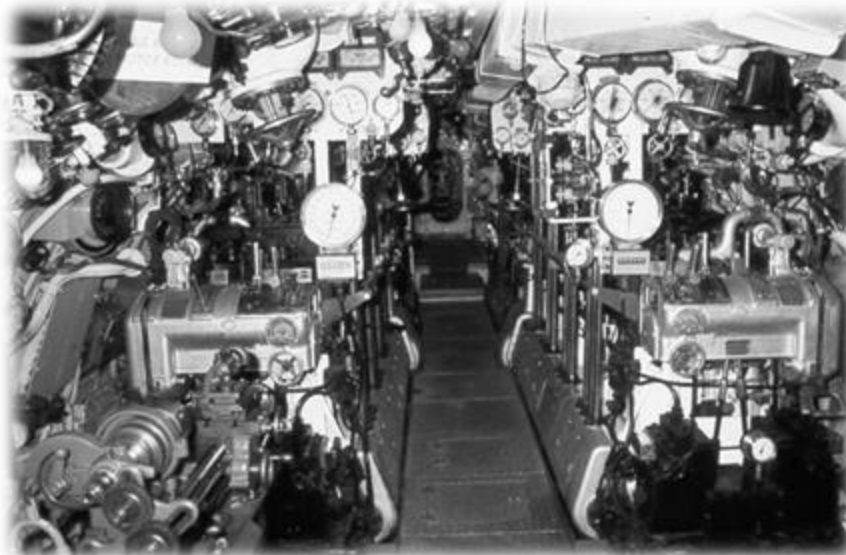
BÖNING

Vessel Monitoring Systems



BÖNING

Vessel Monitoring Systems



In the past, large vessels operated under 24-hour monitoring by men in the engine room for cleaning, checking water, oil, firefighters, and engineers.

The crew was forced to split into shifts in order to keep the machines running smoothly.

BÖNING

Vessel Monitoring Systems



Navigation Lights Panel



Switchboard

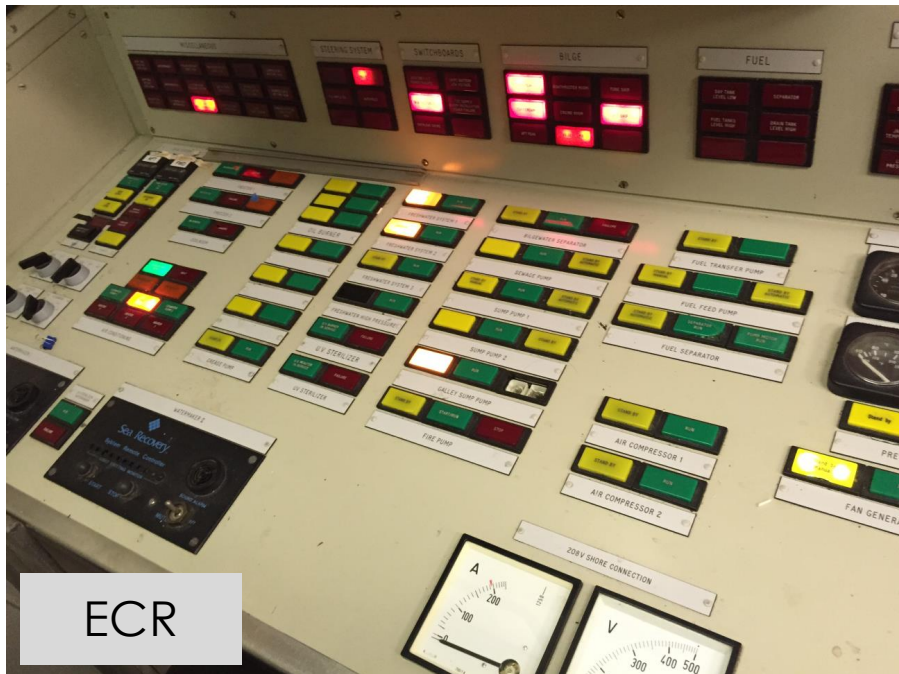
Vessel Monitoring Systems



M/Y Calixe (1993)
Feadship 193ft



Bridge

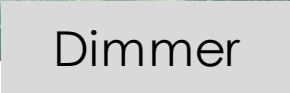


ECR

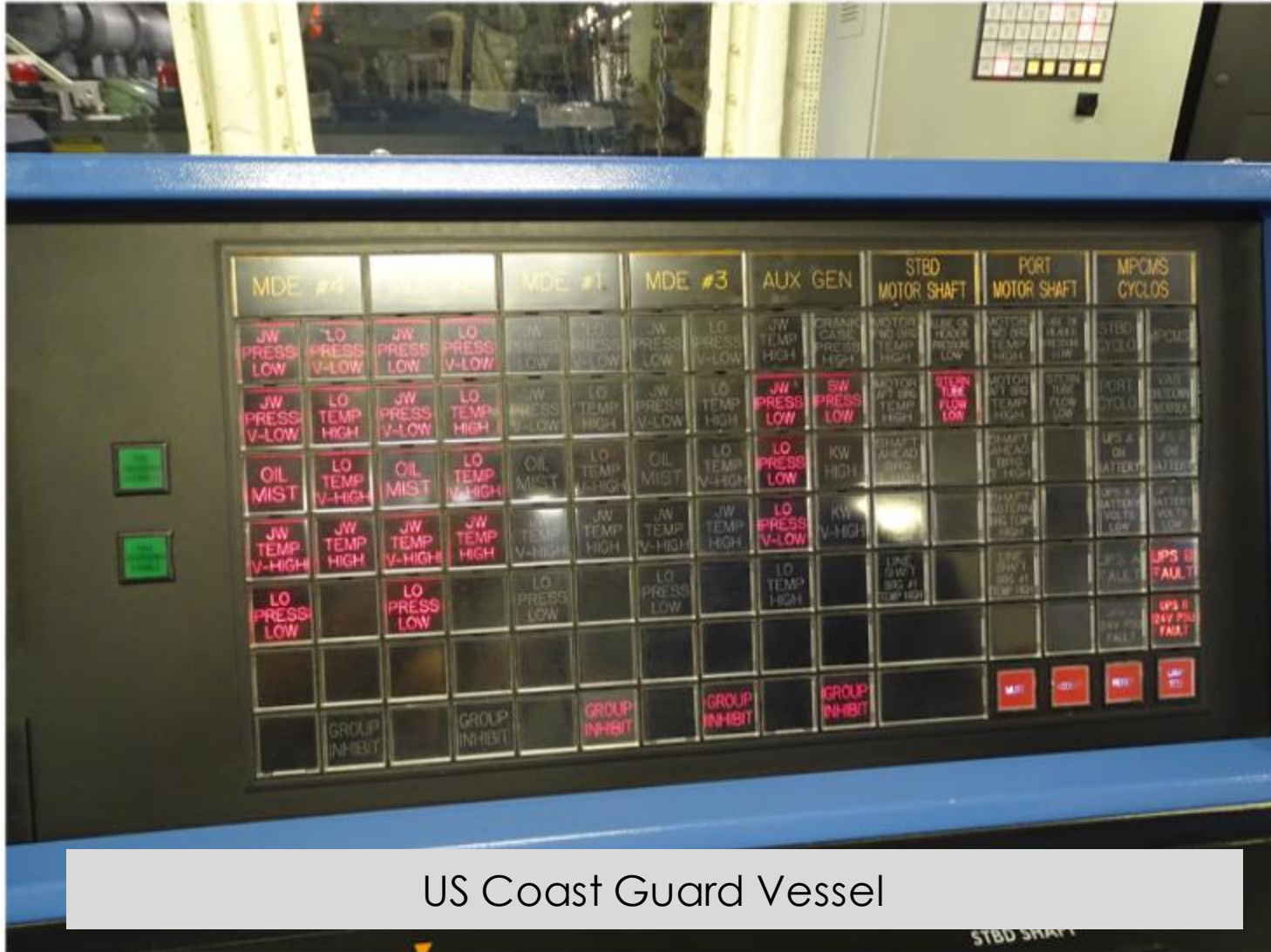


Alarm
Panel

100%



Vessel Monitoring Systems



US Coast Guard Vessel

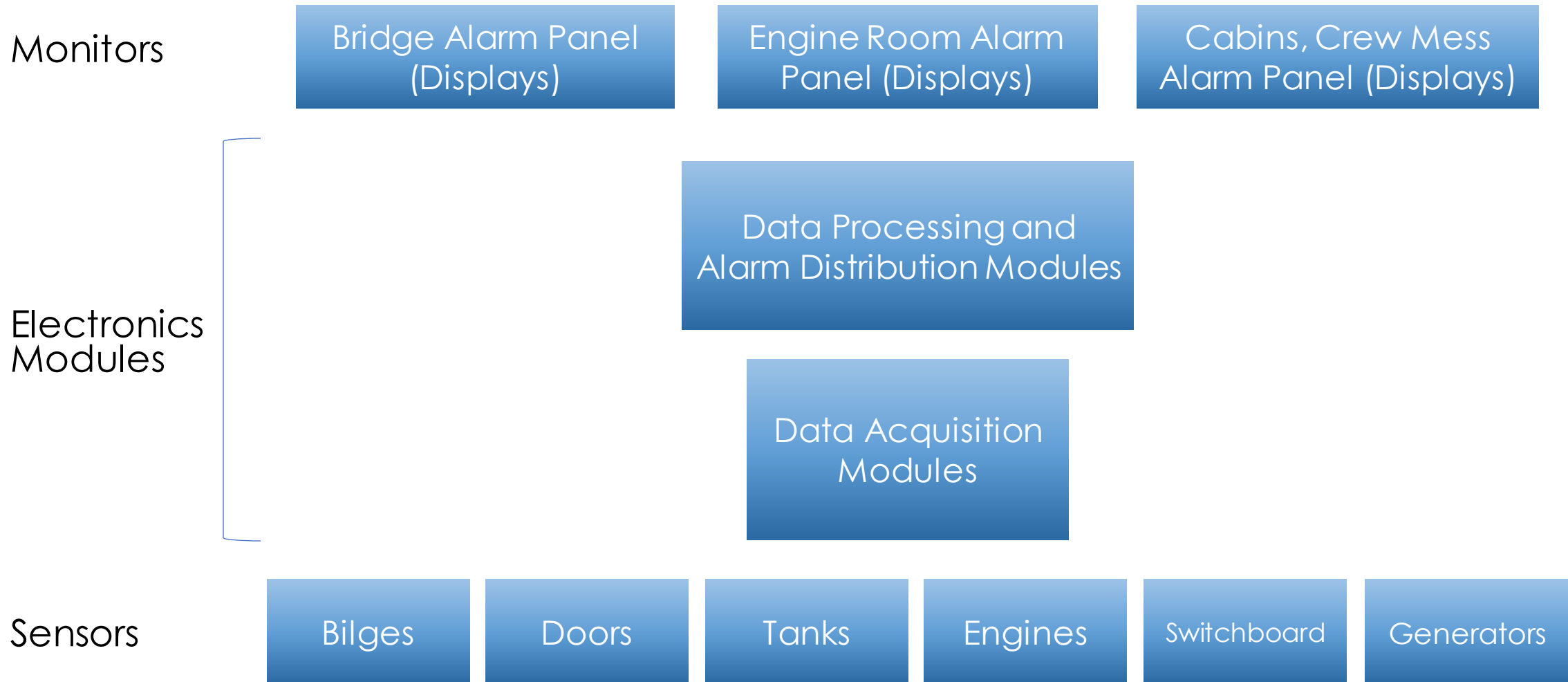


Böning Compact
EDA 47

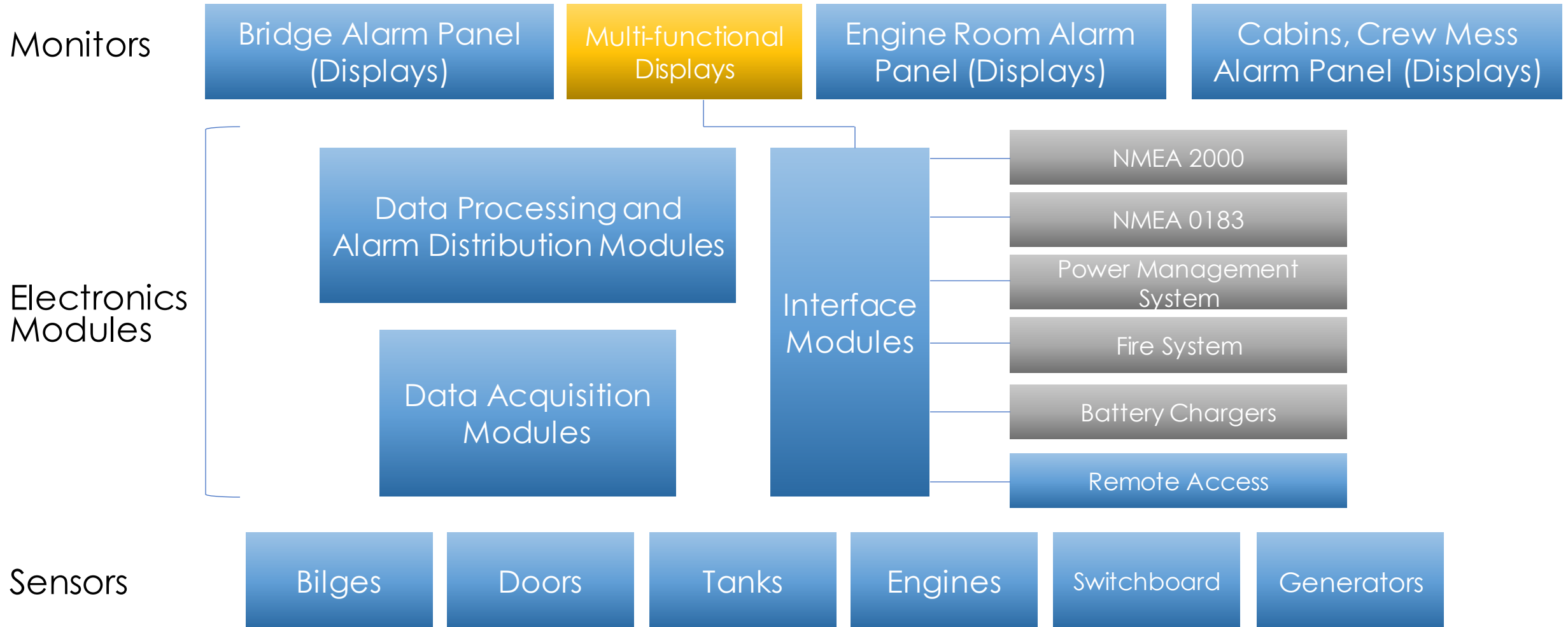
BÖNING

Vessel Monitoring Systems

Classic Architecture



Vessel Monitoring Systems



Vessel Monitoring Systems

Main Station

Engine Control Room

Main Station

Bridge

as an extension of
the Engine Room

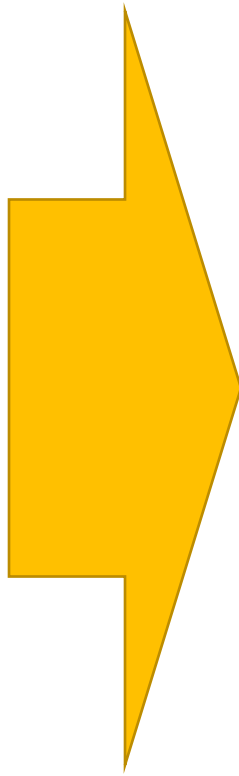
Bridge

Repeaters

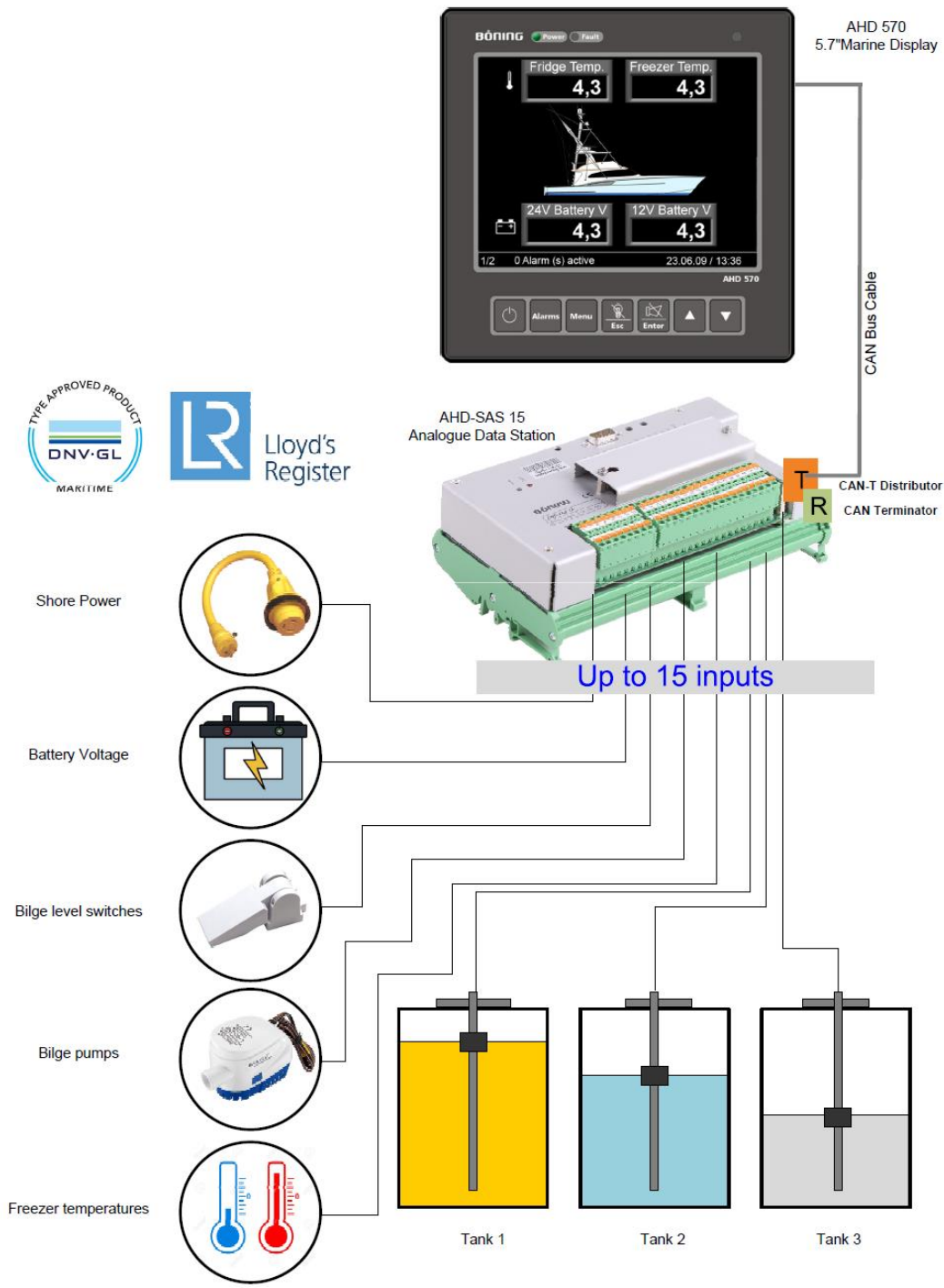
Crew Mess

Engineer's Cabin

1st Mate's Cabin



System Example



- Tank levels indication
- Battery monitoring
- AC power monitoring
- Bilge levels and bilge pumps
- Refrigeration (freezer temp.)
- Smoke alarms
- Exhaust gas temperature alarms
- Etc.

Vessel Monitoring Systems

Yachts 40-70ft / Tugs, Pilot boats



BÖNING

Vessel Monitoring Systems

Yachts 40-70ft / Tugs, Pilot boats



BÖNING

Vessel Monitoring Systems

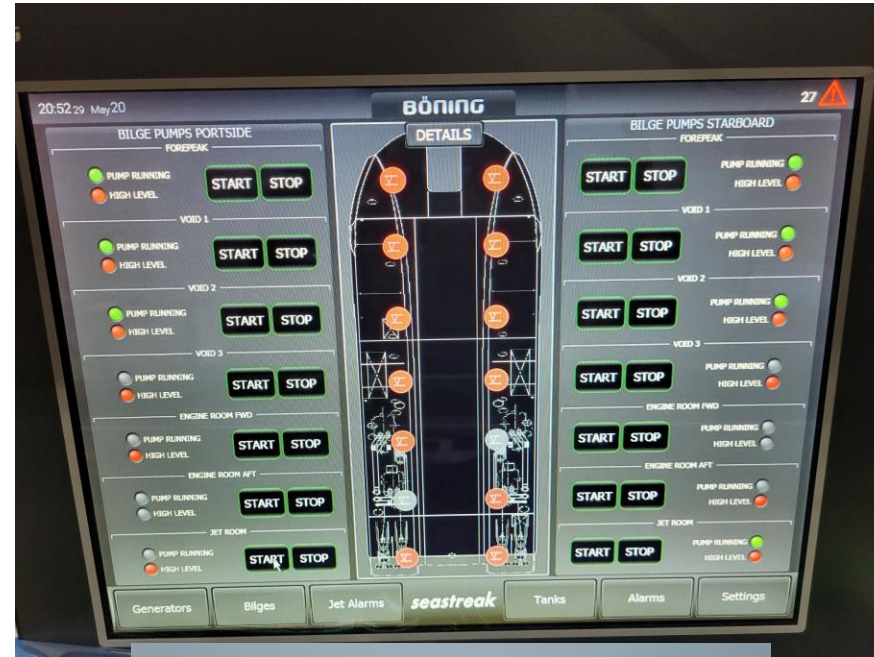
Yachts 75-100 ft / Barges, Ferry boats



Galley /
Engine Room

Vessel Monitoring Systems

Yachts 75-100 ft / WFSV, Ferry boats



Vessel Monitoring Systems

Yachts 100+ ft / Offshore Supply Vessels



Vessel Monitoring Systems

Yachts 100+ ft / Offshore Supply Vessels



öning

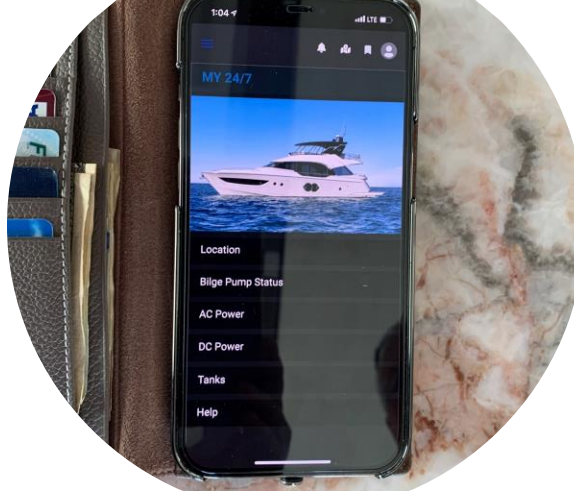
4. Other systems integrated to the ship vessel monitoring



BÖNING

Systems

- CCTV System
- Remote Monitoring
 - B:Connect
- Custom Dash Panels
- Cabin Control Systems
 - Lighting
 - HVAC
 - Audio
- Integrated Bridge Systems
 - Navigation + Automation



Remote Monitoring



Cabin Control



CCTV



Integrated Bridges



Custom Dash Panels

5. Stand-alone devices



BÖNING

Navigation Lights Panel

Modular Control Panel for up to 42 lights (LED or bulb) – with customizable mimic panel



The modular-designed AHD-DPS02 controls and monitors navigation and signal lights on vessels.

Features:

- Modular design (from 14 to 42 lights)
- Control panel with custom layout
- Maintenance-free: no need to replace fuses after a short circuit
- Record operating hours and the number of switching cycles
- Collective alarm and ModBus interface to integrate with third-party alarm systems
- Compatible with AC or DC lights, bulbs or LEDs.

Certificates:



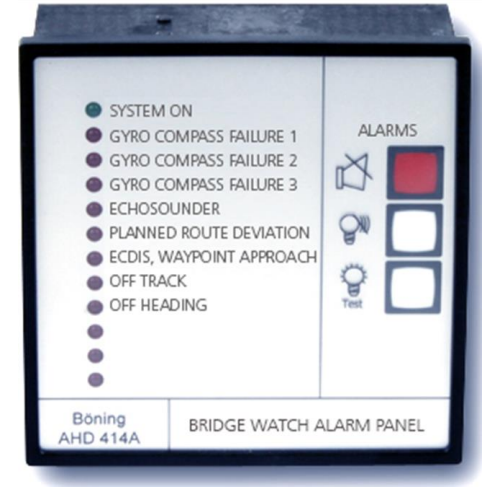
BÖNING

Stand alone devices

- Alarm Panel AHD 414A
- Whistle Operation Panel AHD-WOP
- General Alarm Panel AHD-GAP



Whistle Operation Panel



Alarm Panel



General Alarm Panel

6. Why vessel monitoring and automation is important for marine electronics companies?



BÖNING

Evolution of technology

Paper Charts



Tube



LCDs



MFDs



Garmin OneHelm
Raymarine Lighthouse
Furuno TZ
Böning SmartBridge



Gauges



LEDs



LCDs



MFDs



OneNet
N2K
HTML 5

BÖNING

B:MACS Plotter Edition



BÖNING

B:MACS Plotter Edition



Chart Plotter Gateway



AHD-CPG

BÖNING

7. Integrated Bridge Systems



BÖNING





DANGER
THIS BOAT COMPLIES WITH U.S. COAST GUARD SAFETY STANDARDS IN EFFECT ON THE DATE OF CERTIFICATION. HATTERAS YACHTS, NEW BERN, N.C.

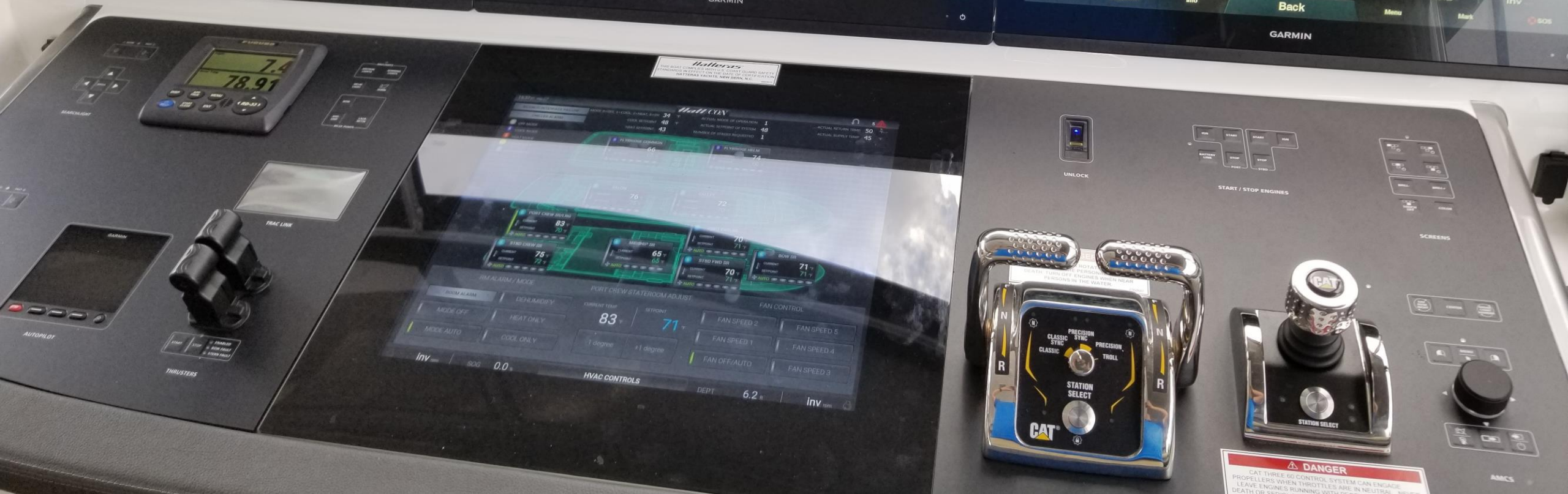
Hatteras
THIS BOAT COMPLIES WITH U.S. COAST GUARD SAFETY STANDARDS IN EFFECT ON THE DATE OF CERTIFICATION. HATTERAS YACHTS, NEW BERN, N.C.

DANGER
THIS BOAT COMPLIES WITH U.S. COAST GUARD SAFETY STANDARDS IN EFFECT ON THE DATE OF CERTIFICATION. HATTERAS YACHTS, NEW BERN, N.C.

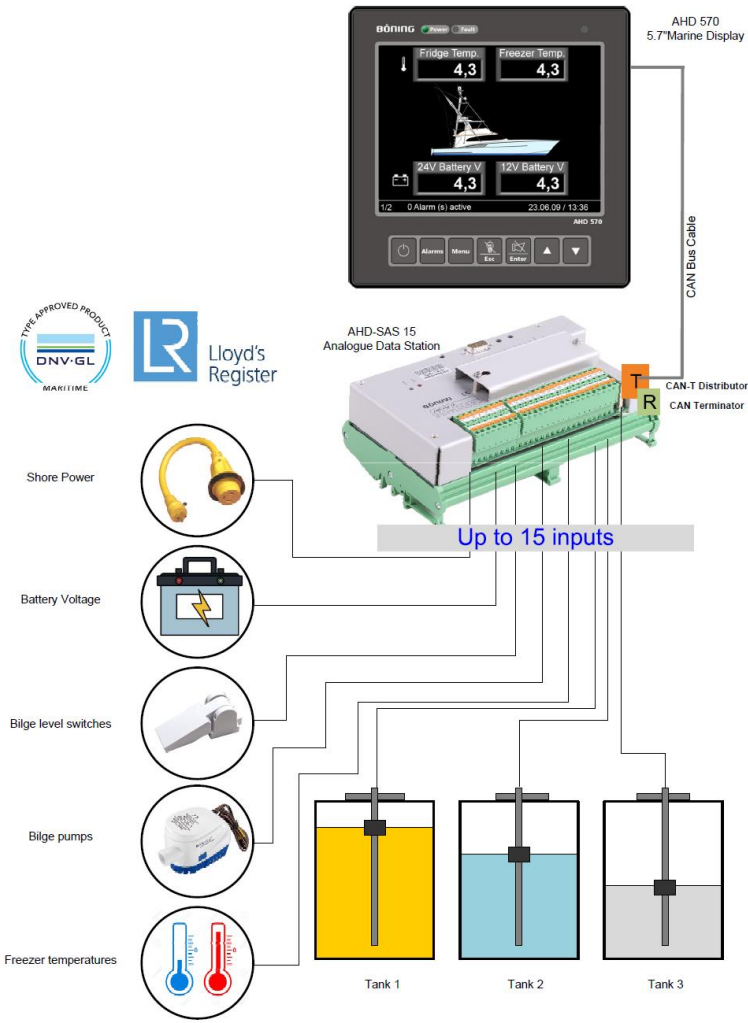




Control panel with various knobs, buttons, and a joystick. The panel includes a digital display showing '247' and '247'. The panel also includes a joystick and several buttons.



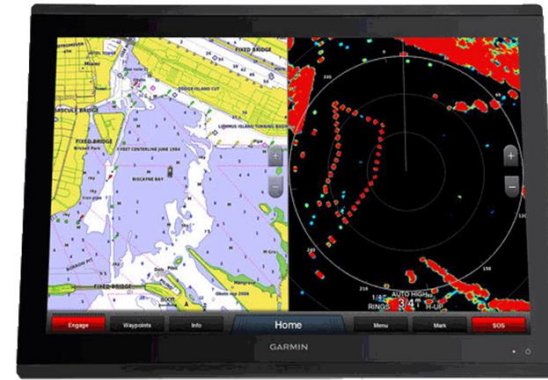
Integrated Bridge Systems for small yachts



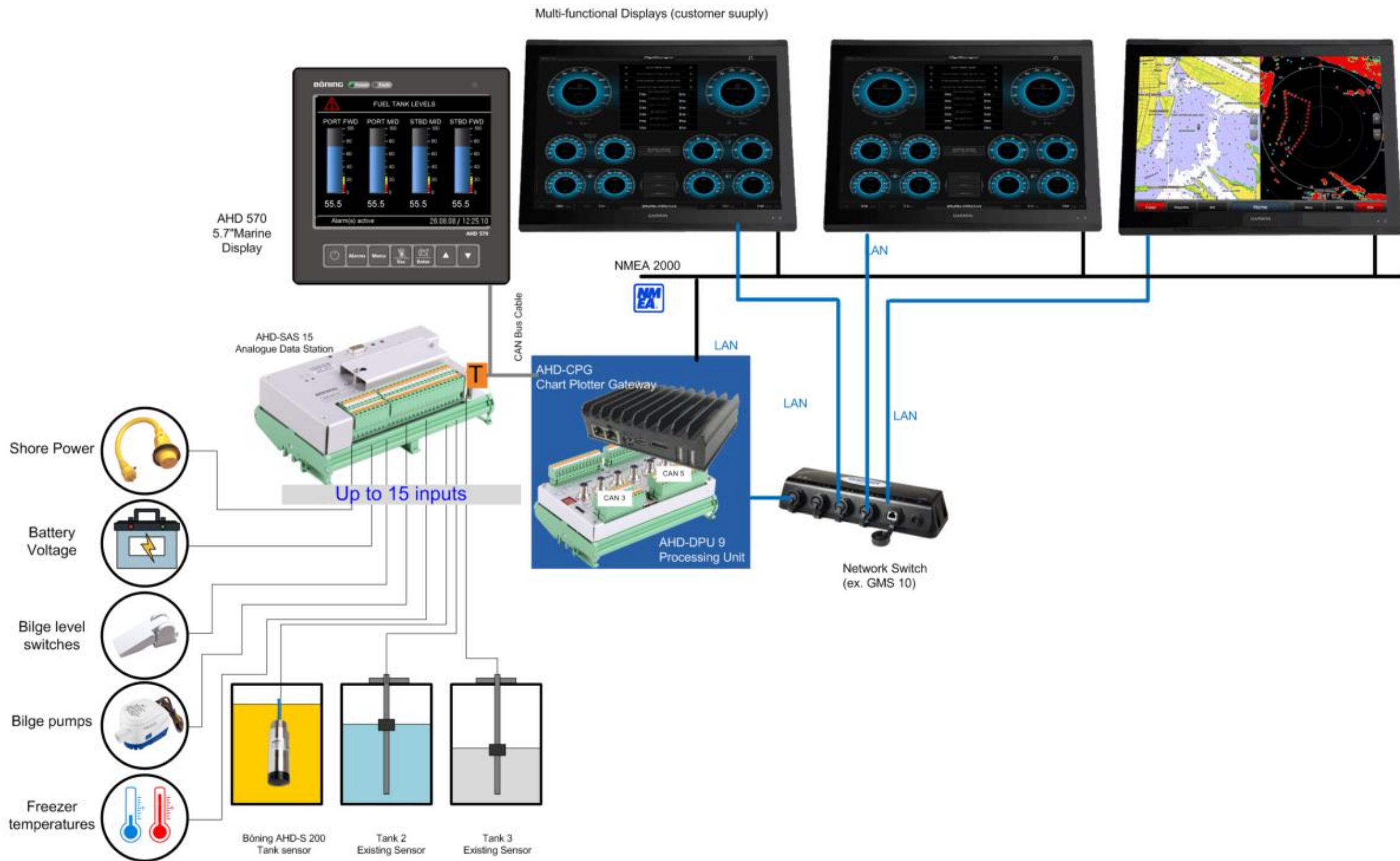
+



+



BÖNING



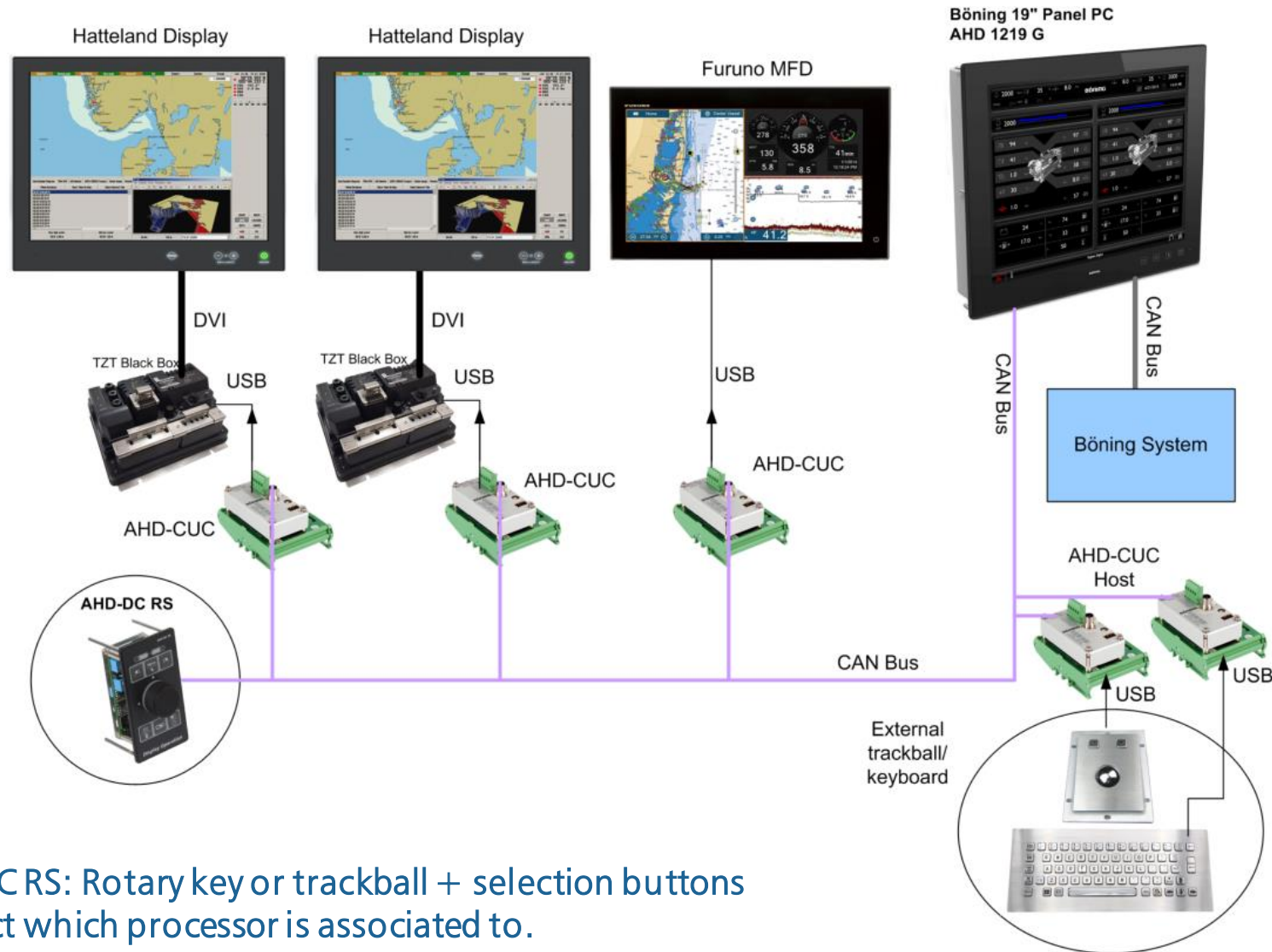
8. Solutions for NMEA dealers



BÖNING

Multi-screen trackball

Solution: Böning AHD-CUC (CAN USB CONVERTER) and Böning AHD-DC RS control panel



AHD-CUC: converts CAN bus information into USB Mouse signal for the MFDs and black boxes

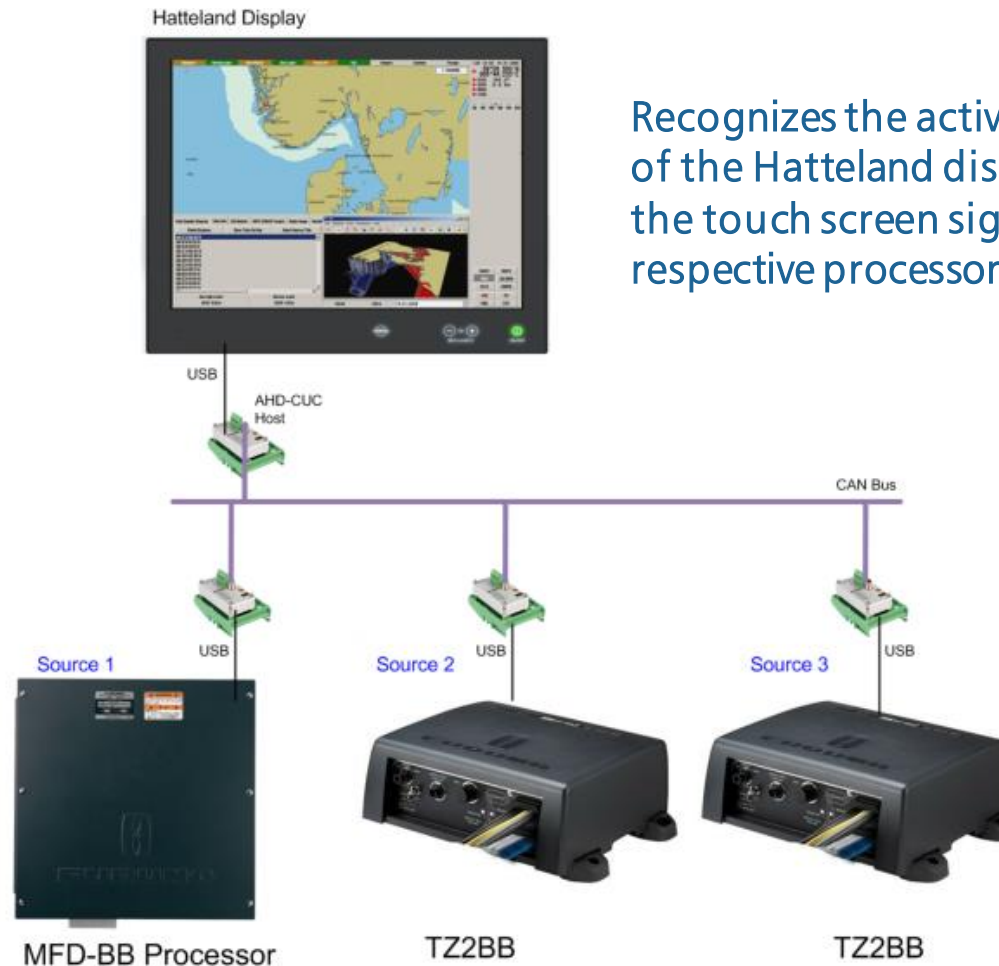
AHD-CUC Host: converts third-party mouse/keyboards to CAN Bus for a multi-screen operation.

AHD-DC RS: Rotary key or trackball + selection buttons to select which processor is associated to.

BÖNING

One screen multiple processors solution

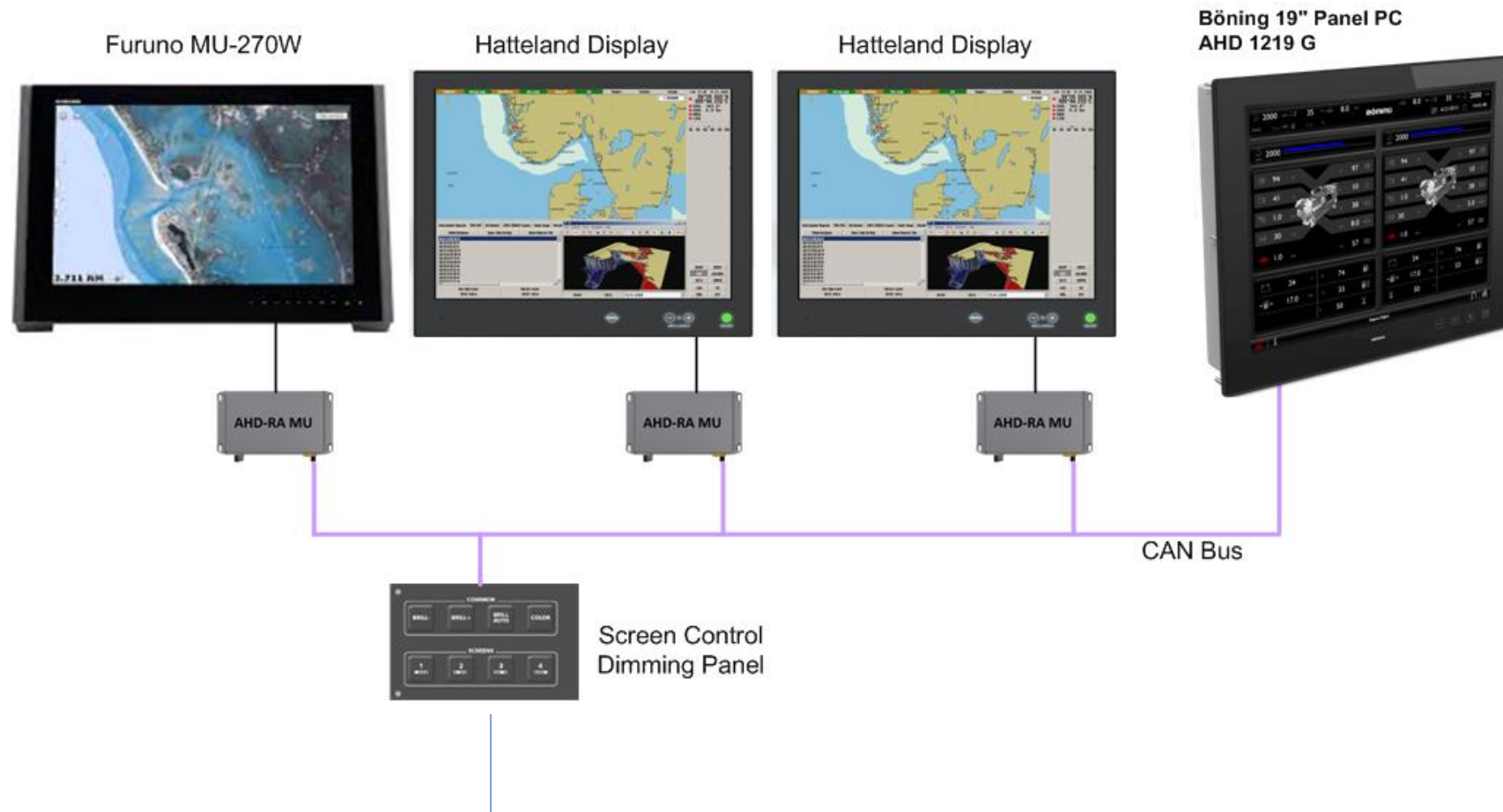
Solves the problem of connecting one touch screen display to multiple sources



Recognizes the active source input of the Hatteland display and sends the touch screen signal to the respective processor.

Multi-screen dimming panel

From one (or more) control panel(s), to dim multiple screens at the same time.



Common Dimming

Access to global dimming settings.
Local dimming remains available.

Remote Power On/Off

Remotely switches the power of
monitors on or off.

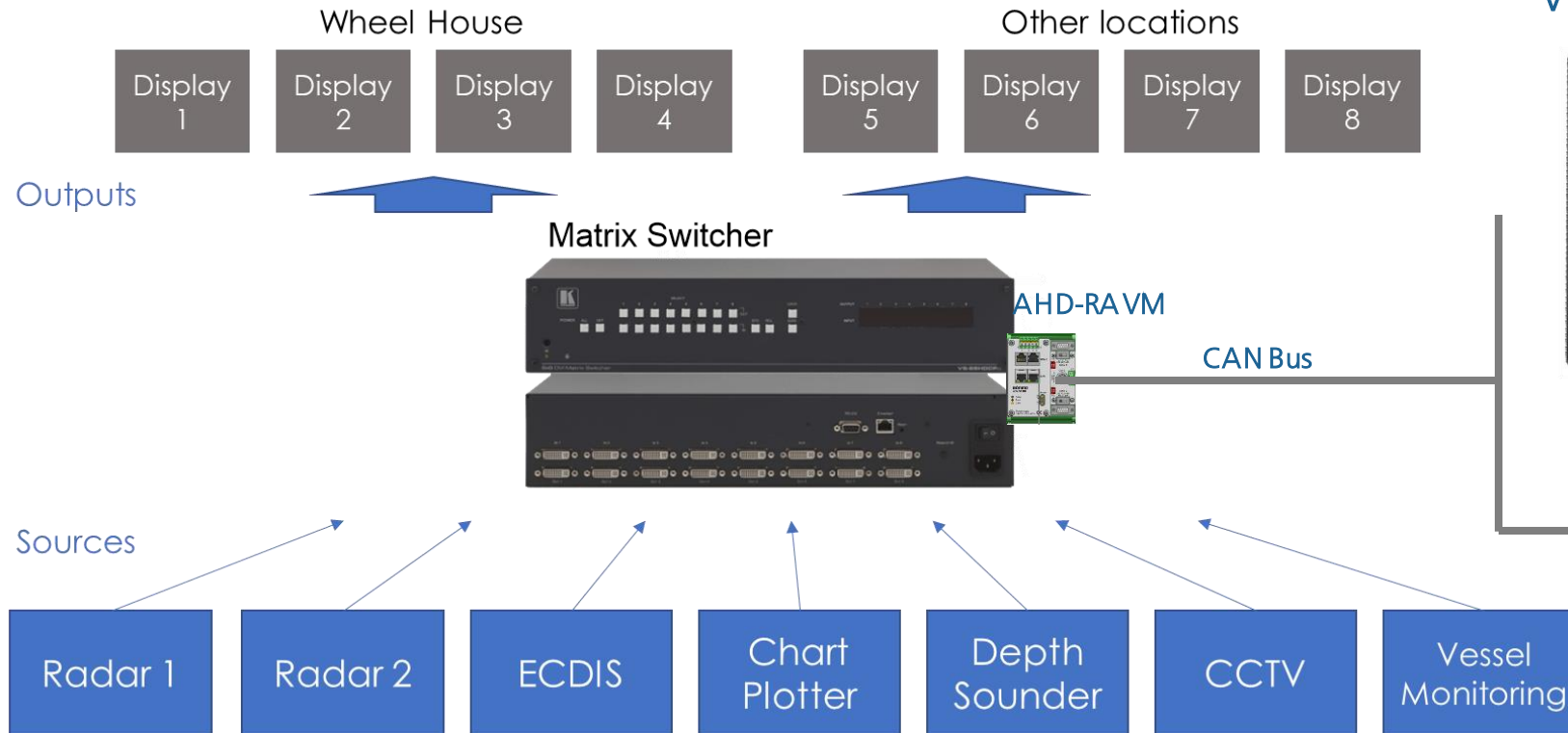
Presets

Define presets and dimming
profiles

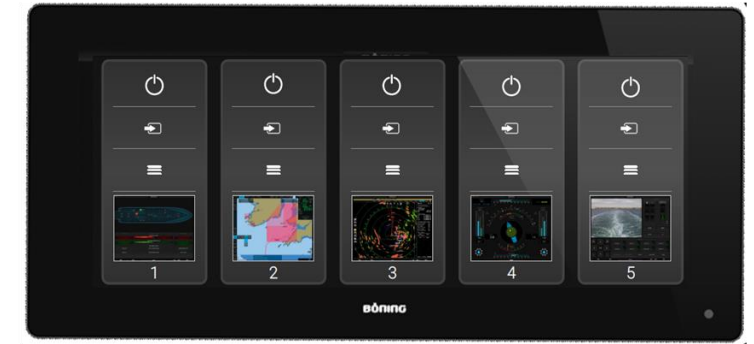
BÖNING

Video matrix control panels

Control all bridge displays and processors through one panel



AHD 1312 GW
Video Matrix Control Touch Screen (12")

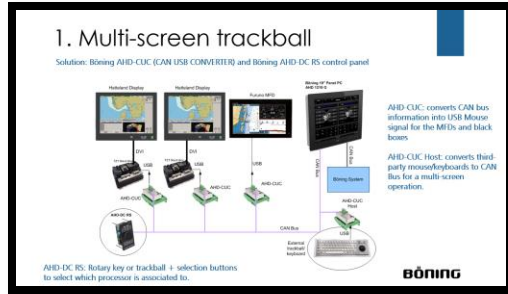


Video Matrix Control Panel

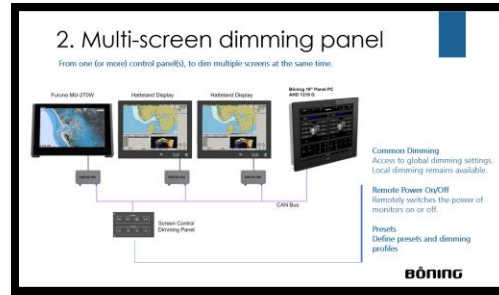
BÖNING

8. Bridge management system

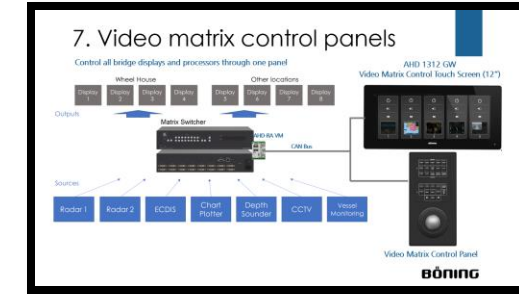
Seamless integration to increase flexibility and usability.



Multi-screen control

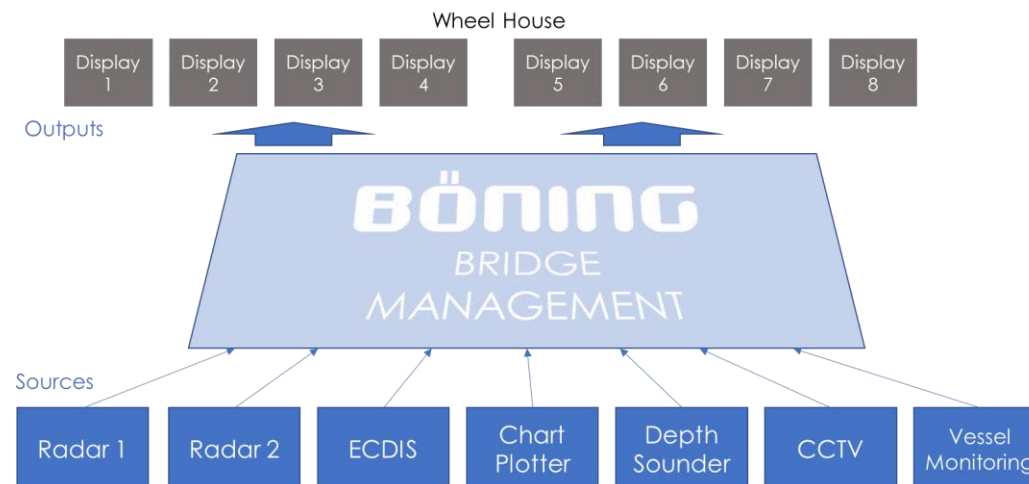


Multi-screen dimming



Video Matrix Control

Böning Bridge Management System



BÖNING

Bridge management system

Seamless integration to increase flexibility and usability.



Commercial boats



Pleasure boats

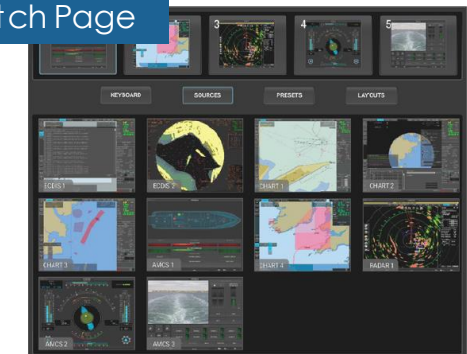
Virtual ECDIS Keyboard



Virtual Radar Keyboard



Video Switch Page



Watch video: www.boeing-usa.com/videos
or <https://www.youtube.com/watch?v=GQM3OWMTSQI>

9. Böning USA Dealership Program



BÖNING

Reseller

Requirements:

- Böning Basic Training

Responsibilities:

- Acquire leads
- System installation (optional)

Benefits:

- 15% discount on equipment, software, service rates
- Böning USA is responsible for:
 - System specification
 - Programming
 - Commissioning
 - After Sales

Integrator

Requirements:

- Böning Advanced Training
- Böning training simulator / customer demonstration

Responsibilities:

- Acquire leads
- System specification
- System installation
- Programming (optional)
- Commissioning (optional)
- After Sales

Benefits:

- 30% discount on equipment, software, service rates

10. Questions?



BÖNING

FOLLOW US IN SOCIAL MEDIA



www.linkedin.com/company/boeningusa/



www.instagram.com/boening.usa/

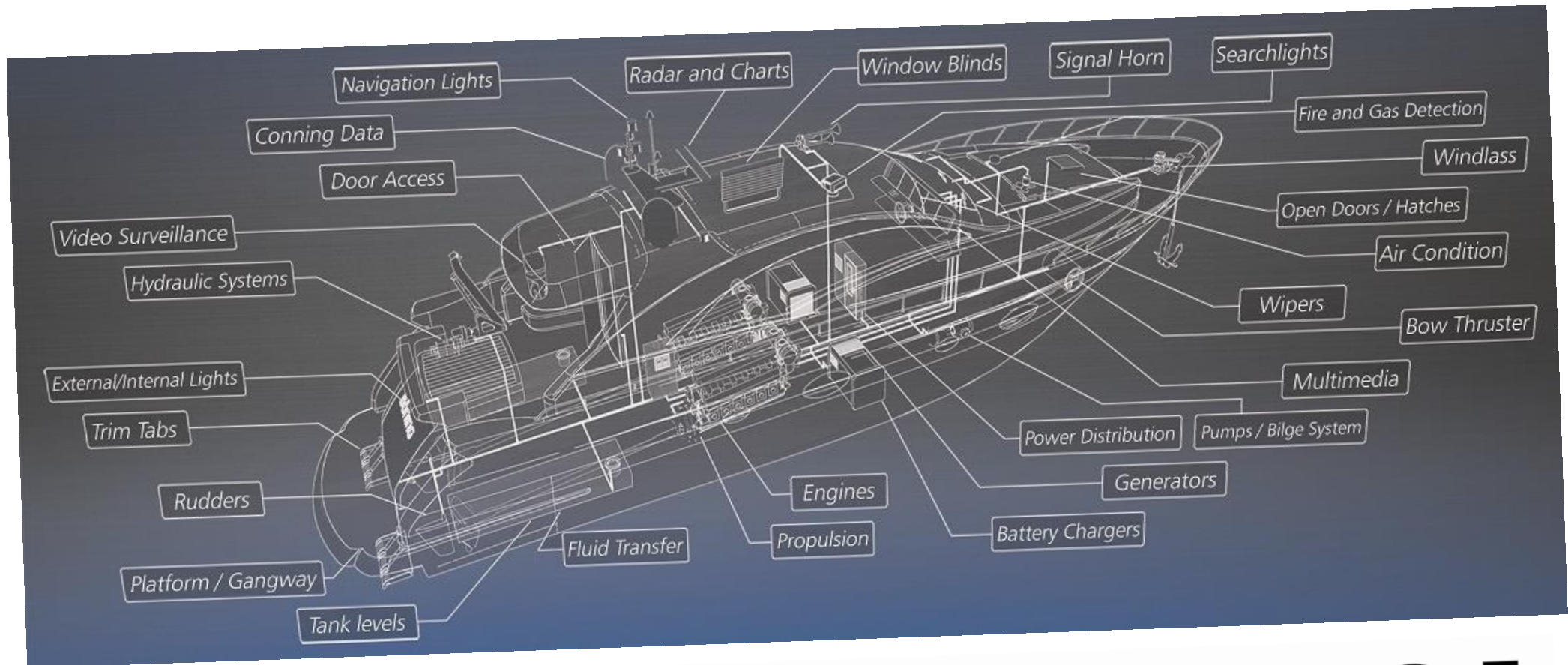


<http://www.facebook.com/boeningusa/>

WWW.BOENING-USA.COM

BOENING

THANK YOU!



BOENING SMART 3 BRIDGE

WWW.BOENING-USA.COM

BOENING